



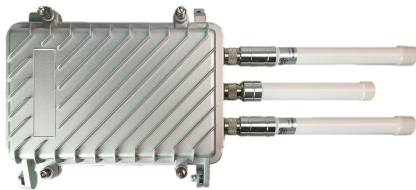
# REMOTE TERMINAL UNIT GATEWAY

MODEL: RTU500LD





## ■ Features



- **Processor & OS**  
A7 processor, runs on Linux for stable operation
- **Wireless Tech**  
Sub1G license-free radio, no wires needed
- **4G & Global Connectivity**  
Built-in LTE-4G module, connects globally via TCP
- **Built-in GPS**  
Integrated GPS module for worldwide location tracking.
- **Heartbeat Maintenance**  
Maintains network heartbeat, supports device connections
- **Dual Frequency**  
Dual-band communication, non-interfering transmit/receive.
- **Support OTA Updates**  
Supports remote firmware upgrades
- **Aluminum Case**  
Waterproof (IP65) all-metal housing

## ■ Cautions

- **The warranty is void if the controller casing is opened by unauthorized personnel.**
- **Installation must be conducted by qualified and professional personnel to ensure compliance.**  
Make sure to properly insulate all wiring terminals to prevent any electrical hazards.  
Rotate the interface connectors carefully during installation to ensure complete and secure contact.  
Follow the interface specifications closely to avoid any incorrect connections.
- **Do not install in environments with prolonged high temperatures to avoid reducing product lifespan.**

## Basic Information

Power Supply	Parameters	Minumum Value	Typical Value	Maximum Value
	AC Input(V)	96	220	264
	Static Power(W)	2.0	3.0	5.0

## Uplink Communication

Parameters		Minumum Value	Typical Value	Maximum Value
Network Mode	/	LTE-TDD; LTE-FDD; WCDMA; GSM		
Bands	TDD	B1/B2/B3/B4/B5/B7/B8/B12/B13/B18/B19/B20/B26/B28		
	FDD	B38/B40/B41		
	WCDMA	B1/B2/B4/B5/B6/B8/B19		
	GSM	B2/B3/B5/B8		
Transmit Power	dBm	23		30
Receiver Sensitivity	dBm	-98.5		-101

## Downlink Communication

Parameters		Minumum Value	Typical Value	Maximum Value
Bnads	MHz	820		1011
Transmit Power	dBm		20	
Receiver Sensitivity	dBm		-137	
Communication Mode	Dual band Communication, with separate frequency points for transmission and reception, ensuring no interference between them.			
Network Access Method	Autonomos Networking			

## Working Environment

Parameter	Min	Typical	Max	Unit	Remarks
Operating Temperature	-40	25	85	°C	Excluding GPRS module
Relative Humidity	5		95	%	Status without condensation
Weight	0.45			KG	
Size (L*W*H)	230*190*75			mm	

## Accessory List

Name	Quantity	Remarks
Gateway	1	
LTE Antenna	1	Omni-directional Antenna
RF Antenna	1	Sub1G Customized Antenna
GPS Antenna	1	GPS, Beidou